

Utilization of Lafarge's Paxton Quarry Site

An example of how one manufacturing facility has partnered with various educational and community groups



Background

- Previous to 1987, the Paxton Quarry was owned and operated by National Gypsum Company.
- Lafarge purchased the Paxton Quarry in 1987 and operated it through 1994 mining Antrim shale.
- Portland cement was manufactured in Alpena from a shale/limestone mix.
- Gradual reclamation/rehabilitation of the site starting in the late 1990s.
- Formal plans developed in 2003 to enhance habitat and return to a “semi-native” state.



Location – approx 12 miles west of Alpena



Site covers approx 320 acres



Wildlife Habitat Council

- The Paxton Quarry became a Wildlife Habitat Council (WHC) “Certified Site” in 2000.
- WHC is a group promoting industry/business involvement with wildlife habitat enhancement.
- Lafarge pursuing WHC “Corporate Lands for Learning” certification to help link the site with multiple educational uses.
- Why? – Is there a need as seen from the educational community? Positive feedback so far...

Wilson Elementary School – 6th Grade

- Nesting tubes for mallard ducks
- Planting trees
- Able to integrate into science classes

Wilson Elementary School – 6th Grade



7

Wilson Elementary School – 6th Grade



8

..and at the Paxton Quarry



...and the tree planting



Long Rapids Elementary School – 5th/6th Grades

- **Supplemented in-class learning with field study**
- **Provided links to science & math classes**

- **Set up 4 learning stations:**
 - Water quality testing
 - Bird identification
 - Habitat types
 - Geology – rocks/fossils

- **Students rotated through each station in groups**

Alpena High School

- **FFA – raised and released chukars and pheasants**

- **FFA – planted habitat and food plots**

- **Forestry class – planted trees**

- **Upward Bound Program – geology & fossils**

Alpena High School FFA - Pheasants



AHS Upward Bound – Fossils in Limestone



...more fossils (or fun?)...



Community Groups

- **Alpena Chapter NWTf – habitat planting**
- **NWTf & Thunder Bay Walleye Club – “Get Kids Fishing” outing**
- **Big Brothers / Big Sisters – fishing with the “bigs and littles”**
- **Boys and Girls Club – fishing outing**

NWTF – Alpena Longbeards Chapter



Fish Stocking Program

- Began in 2003 – this year is the 4th consecutive year.
- Worked with US Fish & Wildlife aquatic biologists to evaluate water quality and potential species mix and compatibility.



...and we went to work...



- Began with 3 species of forage fish the initial year
- Each subsequent year added more forage as well as game fish
 - Smallmouth Bass
 - Largemouth Bass
 - Bluegill
 - Yellow Perch
 - Channel Catfish
 - Walleye
 - Rainbow Trout

Why?

- Belief there was not a quality “shore access” fishery available
- Belief it could be self-sustaining with proper management
- Integrate into rehabilitation
- Benefit to employees & retirees
- Enable quality experience for education & community groups
- Results.....?????



TBWC & NWTF – “Get Kids Fishing” Day



21

It's about the kids...and their fish...and fun



22

...more kids and activities...

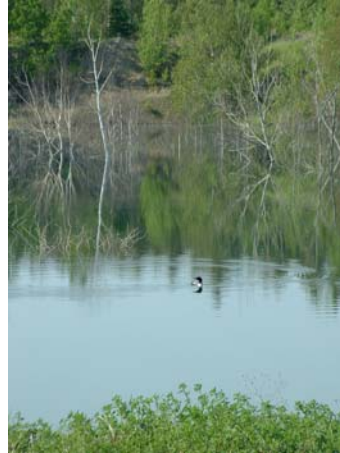


..well attended for the 2nd year



We think there's opportunity out there. We welcome your ideas and involvement.

- **We have the facility**
- **We have some experience**
- **We have some success**
- **You have ideas**
- **You have students**



Interested?

Lafarge contacts:

- **Gil Peterson**
Environmental Engineer
989-358-3346
- **Craig Ryan**
Public Affairs Manager
989-358-3205