

# Rein in the Runoff



## Alternative Stormwater Management Practices that Address the Environmental, Social, and Economic Aspects of Water Resources in the Spring Lake Watershed (MI)

### FINAL PROJECT REPORT

**September 2009**

(Revised: January 2010)



Co-Principal Investigator/Project Manager: Elaine Sterrett Isely  
Principal Investigator: Alan D. Steinman  
Technical Team Members: Kurt Thompson, Jon Vander Molen,  
John Koches



Technical Team Members: Sanjiv Sinha, Lisa Huntington



Funding provided by Michigan Sea Grant and NOAA  
Stakeholder Team Members: Chuck Pistis, Dan O'Keefe



Technical Team Member: Paul Isely, Department of Economics



Stakeholder Team Member: Tim Penning, School of  
Communications

## ***ACKNOWLEDGEMENTS***

---

The Rein in the Runoff Integrated Assessment project was funded primarily through a grant from Michigan Sea Grant and the National Oceanic and Atmospheric Administration, as well as by substantial in-kind contributions by Grand Valley State University's Annis Water Resources Institute. The project team would like to thank John Nash, Spring Lake Township Supervisor; Ryan Cotton, Spring Lake Village Manager; Craig Bessinger, Ferrysburg City Manager; and all of the members of the Rein in the Runoff Stakeholder Steering Committee for their support and participation in this Integrated Assessment. Additionally, the project team would like to thank all of the individuals who reviewed this project report and provided valuable comments for its improvement.

# TABLE OF CONTENTS

---

Acknowledgements.....	ii
Table of Contents.....	iii
List of Tables.....	viii
List of Figures.....	x
Glossary of Terms.....	xiii
Chapter 1: Introduction and Background.....	1
Managing Stormwater Runoff.....	1
Integrated Assessment.....	3
Chapter 2: Conditions in the Spring Lake Watershed related to Stormwater Pollution....	7
Geography and Natural Features.....	7
Population Growth and Land Use Change.....	10
Scope of Stormwater Problem.....	13
Chapter 3: Stakeholder Education and Participation.....	21
Project Website.....	21
Project Branding.....	22
Presentations, Displays, and Demonstrations.....	22
Stakeholder Steering Committee.....	23
Water Quality Survey.....	25
Citizens Guide to Stormwater.....	29

Chapter 4: Stormwater Best Management Practices (BMPs).....	31
Structural BMPs.....	31
Infiltration BMPs.....	37
Filtration BMPs.....	37
Regional Storage Areas.....	38
Regional Treatment Areas.....	38
Site-Specific BMPs.....	38
Effects of Implementing Wide-Spread Structural BMPs.....	38
Nonstructural BMPs.....	43
Ordinances.....	43
Animal Waste Management.....	47
Nonpoint Source and Stormwater Education.....	47
Stormwater Utility Ordinance.....	48
Chapter 5: Economic Analysis of Stormwater Management Alternatives.....	51
Direct Costs.....	51
Opportunity Costs and Benefits.....	53
Cost Effectiveness and Pollution Reduction.....	55
Cost-Benefit Analysis.....	55
Chapter 6: Population Growth and Stormwater Pollution.....	61
Potential Land Use Changes Resulting from Continued Population Growth in the Spring Lake Watershed.....	61
Effects of Future Development on Pollutant Loads to Spring Lake.....	63

Chapter 7: Rein in the Runoff Products and Resultant Projects.....	67
Conceptual Model.....	67
Spring Lake Watershed Atlas.....	69
Spring Lake Shoreline Assessment.....	69
Functional Wetlands Assessment.....	70
Grant Resources.....	72
Technical Presentations and Publication.....	74
Chapter 8: Rein in the Runoff Conclusions and Next Steps.....	75
Literature Cited.....	79
Appendix A: Datasets and Hydrologic Models.....	87
Existing Datasets.....	88
Land Use and Land Cover Update.....	89
Modeling the Effects of Stormwater Runoff on Current Conditions.....	90
Long-Term Hydrologic Impact Assessment and Nonpoint Source Pollutant Model (L-THIA NPS or L-THIA).....	90
Pollutant Loading Application (PLOAD).....	91
Impervious Surface Analysis Tool (ISAT).....	98
Appendix B: Rein in the Runoff Integrated Assessment Project Flyers.....	99
Appendix C: Stakeholder Presentations for the Rein in the Runoff Integrated Assessment Project.....	103
Appendix D: Rein in the Runoff Water Quality Surveys.....	107
Appendix E: Rein in the Runoff Citizens Guide to Stormwater in the Spring Lake Watershed.....	115

Appendix F: BMP Review and Analysis.....	123
Model Stormwater Management Projects.....	124
Macro-Scale BMP Analysis.....	124
Step 1: Identification of Priority Areas.....	125
Step 2: Evaluation of Existing Riparian Buffers.....	125
Step 3: Identification of Public Properties for BMPs.....	125
Step 4: Identification of Opportunities for Infiltration BMPs.....	126
Step 5: Identification of Opportunities for Filtration BMPs.....	126
Step 6: Identification of Universal BMPs.....	126
Modeling Pollutant Loads after Application of BMPs.....	127
Appendix G: Model Stormwater Ordinance and Performance Standards.....	129
Rein in the Runoff Model Low Impact Development Stormwater Ordinance for the Communities in the Spring Lake Watershed.....	130
Rein in the Runoff Draft Stormwater Performance and Design Standards.....	160
Appendix H: Animal Waste Management Ordinances.....	163
Animal Waste Ordinance.....	164
Waterfowl Ordinance.....	165
Appendix I: Stakeholder Education and Outreach Resources.....	167
Appendix J: Stormwater Utility Ordinance Guidance.....	169
City of Marquette (MI) Stormwater Utility Ordinance.....	170
Guidance on Establishing Stormwater Utility Fees.....	175

Appendix K: Population Allocation Model (PAM).....	177
Potential Future Growth and Land Use Change.....	178
Growth Potential Module.....	180
Land Availability Module.....	182
Land Desirability Module.....	183
Appendix L: Rein in the Runoff Spring Lake Watershed Atlas.....	191
Appendix M: Rein in the Runoff Scientific and Policy Publications and Presentations.....	193

# *LIST OF TABLES*

---

Table 2-1. Natural Resources Conservation Service Hydrologic Soil Groups.....	10
Table 3-1. Rein in the Runoff Integrated Assessment Project Stakeholder Steering Committee Meetings.....	23
Table 3-2. Water Quality Survey Results Regarding Stakeholder Behaviors.....	28
Table 4-1. Structural Best Management Practices (BMPs) Alternatives Appropriate for Implementation in the Spring Lake Watershed.....	33
Table 4-2. PLOAD Results With and Without BMPs for TN, TP, and TSS in the Spring Lake Watershed for 2006 Land Use and Land Cover.....	39
Table 4-3. Nonstructural Best Management Practices (BMPs) Alternatives for Potential Implementation in the Spring Lake Watershed.....	44
Table 4-4. Current Spring Lake Watershed Local Ordinances that Address Stormwater Management.....	45
Table 5-1. Direct Initial Costs to Treat 1 Acre of Impervious Surface Area.....	52
Table 5-2. Additional Yearly Maintenance Costs per 1 Acre of Impervious Surface Area.....	52
Table 5-3. Opportunity Costs to Treat 1 Acre of Impervious Surface Area.....	54
Table 5-4. Average Percent Reductions in Pollutant Loads for Different BMPs.....	55
Table 5-5. Estimated BMP Costs per 1 Acre of Impervious Surface Area.....	56
Table 5-6. Cost Effectiveness Associated with Pollutant Load Reductions Per Treated Acre.....	57
Table 6-1. PLOAD Results for Pollutant Loads from the Spring Lake Watershed based on the Population Allocation Model's (PAM) Forecasted Residential Growth and Patterns of Development in 2010, 2020, 2030, and 2040.....	63
Table 7-1. Length and Percent of Shoreline Categories Identified for the Spring Lake Shoreline Assessment Conducted in August 2009.....	70



Table 7-2. Potential Sources of Federal Funding for Stormwater Management and Nonpoint Source Pollution Control Projects.....	72
Table 7-3. Potential Sources of State and Private Funding for Stormwater Management and Nonpoint Source Pollution Control Projects.....	73
Table A-1. Rainfall to Runoff Ratios for the Sub-Watershed Basins in the Spring Lake Watershed.....	94
Table A-2. Event Mean Concentration (EMC) Tabular Input Data for PLOAD Model Runs.....	95
Table F-1. Spring Lake Watershed BMPs Conversions to Rein in the Runoff Project Land Use and Land Cover Classifications.....	127
Table K-1. Population Allocation Model (PAM) Growth Potential Module Estimates of Spring Lake Watershed Population Over Time.....	181
Table K-2. PAM Population Density Calculations for the Spring Lake Watershed.....	183
Table K-3. PAM Land Availability Module Projected Growth and Development in the Spring Lake Watershed.....	183
Table K-4. PAM Decision Support File for the Spring Lake Watershed.....	184

# *LIST OF FIGURES*

---

Figure 1-1. Rein in the Runoff Integrated Assessment approach for stormwater management alternatives in the Spring Lake Watershed.....	5
Figure 2-1. Geographic location of Spring Lake in Michigan’s western lower peninsula..	7
Figure 2-2. Municipal jurisdictions within the Spring Lake Watershed boundary and downstream to the mouth of the Grand River.....	8
Figure 2-3. Classification of soils in the Spring Lake Watershed by Hydrologic Soil Groups.....	9
Figure 2-4. Significant land use change in the Spring Lake Watershed 1978-2006.....	11
Figure 2-5. Population density (2000) of the Spring Lake Watershed.....	12
Figure 2-6. Percent change in impervious surface cover in the Spring Lake Watershed from 1978 – 2006.....	14
Figure 2-7. Total phosphorus levels (parts per billion) in Spring Lake (1999 – 2003)....	15
Figure 2-8. Rein in the Runoff modeling results for Total Phosphorus loadings from the Spring Lake Watershed based on 2006 land use and cover.....	16
Figure 2-9. Rein in the Runoff modeling results for Total Nitrogen loadings from the Spring Lake Watershed based on 2006 land use and cover.....	17
Figure 2-10. Rein in the Runoff modeling results for Total Suspended Solids loadings from the Spring Lake Watershed based on 2006 land use and cover.....	18
Figure 3-1 Water Quality Survey responses regarding the water quality of Spring Lake.....	26
Figure 3-2 Water Quality Survey responses regarding stakeholder willingness to pay for phosphorus reduction below 20 ppb.....	27
Figure 3-3 Water Quality Survey responses rating potential sources of pollution to Spring Lake.....	27
Figure 4-1. Rein in the Runoff macro-scale BMP selection analysis for the Spring Lake Watershed.....	35

Figure 4-2. High priority areas for implementation of Low Impact Development (LID) BMPs in the Spring Lake Watershed.....	36
Figure 4-3. PLOAD results with and without BMPs for Total Nitrogen mapped to the ArcSWAT sub-basins for the Spring Lake Watershed’s 2006 land use and land cover.....	40
Figure 4-4. PLOAD results with and without BMPs for Total Phosphorus mapped to the ArcSWAT sub-basins for the Spring Lake Watershed’s 2006 land use and land cover.....	41
Figure 4-5. PLOAD results with and without BMPs for Total Suspended Solids mapped to the ArcSWAT sub-basins for the Spring Lake Watershed’s 2006 land use and land cover.....	42
Figure 6-1. Projected land use and land cover changes in the Spring Lake Watershed in 2010, 2020, 2030, and 2040, based on the Population Allocation Model’s (PAM) projected residential growth and population allocation.....	62
Figure 6-2. Linked model results from PAM and PLOAD for Total Nitrogen (TN) mapped to the ArcSWAT sub-basins for the Spring Lake Watershed based on projected residential growth and development in 2010, 2020, 2030, and 2040.....	64
Figure 6-3. Linked model results from PAM and PLOAD for Total Phosphorus (TP) mapped to the ArcSWAT sub-basins for the Spring Lake Watershed based on projected residential growth and development in 2010, 2020, 2030, and 2040.....	65
Figure 6-4. Linked model results from PAM and PLOAD for Total Suspended Solids (TSS) mapped to the ArcSWAT sub-basins for the Spring Lake Watershed based on projected residential growth and development in 2010, 2020, 2030, and 2040.....	66
Figure 7-1. Rein in the Runoff Integrated Assessment stormwater runoff conceptual ecological model.....	68
Figure 7-2. Spring Lake Shoreline Assessment of the hardened and natural shoreline features of Spring Lake (MI) in August 2009.....	71
Figure A-1. Spring Lake Watershed sub-watershed basin divisions for PLOAD Simple Method Analysis.....	93
Figure A-2. Output window for BASINS 4.0 project for the Spring Lake Watershed 2006 land use and land cover PLOAD model run.....	96
Figure A-3. PLOAD results for total pollutant loads for the Spring Lake Watershed for 1978, 1992/97, and 2006.....	97

Figure K-1. Population Allocation Model (PAM) flow chart showing model components.....	179
Figure K-2. PAM population growth and allocation map for the Spring Lake Watershed for 2010.....	186
Figure K-3. PAM population growth and allocation map for the Spring Lake Watershed for 2020.....	187
Figure K-4. PAM population growth and allocation map for the Spring Lake Watershed for 2030.....	188
Figure K-5. PAM population growth and allocation map for the Spring Lake Watershed for 2040.....	189

## *Chapter 1: Introduction and Background*

---

Rein in the Runoff is a collaborative, community-based Integrated Assessment project that examines the causes, consequences, and corrective alternatives available to the communities within and downstream of the Spring Lake Watershed (MI). The project goal is to minimize the negative impacts of polluted stormwater runoff to local water bodies. Led by researchers at Grand Valley State University's Annis Water Resources Institute (AWRI), an interdisciplinary team with expertise in aquatic ecology, environmental law and policy, environmental engineering and consulting, GIS and data analysis, economics, communications, and outreach and education, has been working with stakeholders to help address management and stewardship issues regarding stormwater discharges.

This 190-page report describes the environmental, social, and economic conditions in the Spring Lake Watershed that led to the development of the Rein in the Runoff Integrated Assessment (IA). It summarizes the technical and stakeholder components of the IA process, including the underlying data and modeling approaches relied upon by the project team to assess the causes and consequences of stormwater pollution within the watershed, and the extent of the stakeholder education and participation. A suite of common stormwater best management practices – or BMPs – are provided with spatial guidance for the most appropriate locations for implementation of structural BMPs throughout the Spring Lake Watershed, as well as an economic assessment of each structural and nonstructural stormwater BMP. The analysis also includes projections for future stormwater pollution in light of different rates of population growth and continued urbanization of the watershed. The Rein in the Runoff project report concludes with the Integrated Assessment results, project products, and potential next steps for watershed stakeholders. Appendices provide supplemental technical information regarding different aspects of the IA process and Rein in the Runoff products and results.

### **MANAGING STORMWATER RUNOFF**

The management of stormwater and stormwater runoff is an important issue for municipalities, whose citizenry demand clean drinking water, the prevention of flooding, water drainage, and sanitation (Chocat et al. 2001). As new development throughout the United States continues to outpace population growth (Theobald 2005), there is a greater loss of rural and natural lands to increasing amounts of impervious cover (Dougherty et al. 2006). Impervious surfaces are roadways, rooftops, driveways, parking lots and other impermeable land covers within an urban landscape (Schueler 1994). As rainwater falls onto these hardened surfaces, it cannot soak into the ground, and instead runs off into local surface waterways.

Stormwater runoff creates a variety of problems for land use managers, homeowners, fish and wildlife, and ecological systems. As more water flows into streams and rivers, it can result in unstable and eroding channels, loss of instream habitat, and more severe and more frequent flooding problems (Schueler 1994). It also collects pollutants (such as street dust, eroded sediments, heavy metals, road salt, oil and grease, organic matter, nutrients, and pesticides) from impervious surfaces, farm fields, residential lawns, and commercial and industrial properties, and deposits them in receiving waterbodies (Obropta and Kardos 2007; Tsihrintzis and Hamid 1997; Domalgaski 1996; McFarland and Hauck 1999). This, in turn, can degrade water quality, lead to fish kills and loss of species diversity, stimulate algae blooms, and create public health risks (Schueler 1994; Trim and Marcus 1990; Steinman and Ogdahl 2008; Obropta and Kardos 2007). Generally, the more impervious surface cover within a watershed, the greater the problems associated with stormwater runoff tend to be (Alberti et al. 2007). Watersheds with impervious surface cover greater than 10% are considered to be impaired, but water quality impacts are measurable in watersheds with even lower levels of hardened surface areas (Schueler 1994).

Further, these effects are only expected to increase as global warming progresses (Madsen and Figdor 2007). Scientists are predicting that global climate change will cause warming temperatures and an increase in the frequency of extremes in the hydrologic cycle – i.e., severe storms, increased flooding, and more periods of drought (Patz et al. 2008).<sup>1</sup> Heavy runoff associated with these severe storm events can increase the risk of sewage overflows, contaminate local recreational waters, decrease the productivity of agricultural lands, and increase the risk of human illnesses (Patz et al. 2008; Madsen and Figdor 2007; McLellan et al. 2007). These problems can be further compounded by urbanized waterfront communities, which provide for decreased flow path lengths for stormwater runoff into local waterways (Beighley et al. 2008).

Although numerous studies have been conducted addressing the water quality impacts of stormwater and stormwater runoff, considerable obstacles continue to impede progress in developing and applying effective watershed-based approaches to managing stormwater. In many cases, local officials simply do not fully understand the impacts of, or the need to control, stormwater runoff. While they may be concerned about the quality of a natural resource, there may be no consensus about the goals for management of that resource. Alternatively, the value of the resource is not considered high enough to spend money fixing the associated problems, and other budgetary items take priority. Decision-makers simply may be unaware of the impacts of stormwater discharges to their local water resources. Although flood control is an obvious problem that needs attention, the reduction in groundwater baseflow resulting from impervious area that limits or prevents water from soaking into the ground, for example, might not be noticed. In addition, uncertainties in the performance and cost of stormwater control measures, limited funding and other resources, and ongoing maintenance and

---

<sup>1</sup> Grand Rapids (MI) is one of 55 cities nationwide to see a significant increase in the frequency of major storms with heavy precipitation in the last 50 years (Madsen and Figdor 2007).

opportunity costs can impede implementation of stormwater BMPs (Roy et al. 2008). Finally, future problems resulting from stormwater runoff have not been fully identified in urbanizing watersheds.

## **INTEGRATED ASSESSMENT**

Because of the complex ecological, political, and social processes associated with stormwater management, the project team adopted an Integrated Assessment approach for the Spring Lake Watershed. Integrated assessment (IA) is the synthesis of existing natural and social scientific knowledge to solve a natural resource management problem or policy question (Parson 1995; Hillman et al. 2005). IA is an active and rapidly developing field, and a multitude of approaches exist to aid in solving environmental resource management questions and policy issues (Hisschemöller et al 2001). For the Rein in the Runoff IA, we selected the six-step approach outlined in Scavia and Bricker (2006):

1. Define the policy relevant question around which the IA is to be performed.
2. Document the status and trends of appropriate environmental, social, and economic conditions related to the issue.
3. Describe the environmental, social, and economic causes and consequences of those trends.
4. Provide forecasts of likely future conditions under a range of policy or management options.
5. Provide technical guidance for the most cost effective means of implementing each of those options.
6. Provide an assessment of the uncertainties associated with the information generated in Steps 1-5.

The initial policy question for this IA was developed by Michigan Sea Grant and public officials from Spring Lake Township and the Village of Spring Lake. The policy and management objectives that these communities had regarding water quality and the management of stormwater runoff included the identification of *the causes, consequences and correctives of stormwater discharges to the watersheds surrounding Spring Lake Township and the Village of Spring Lake, specifically Spring Lake, the Grand River and ultimately, Lake Michigan*. The primary objectives identified for the Rein in the Runoff IA were to:

- Increase Spring Lake area residents' and decision-makers' general knowledge and understanding of the causes and consequences of stormwater runoff, and how they apply specifically to Spring Lake, the Grand River, and Lake Michigan;

- Increase stakeholder stewardship of the water resources surrounding Spring Lake Township and the Village of Spring Lake, and in particular, increase participation in stormwater control and management;
- Identify inconsistencies between state regulations and/or local ordinances that can improve local stormwater management and control;
- Provide a suite of alternative stormwater management Best Management Practices (BMPs) tailored to Spring Lake Township and the Village of Spring Lake.

However, once established, the project team – with input from these same community representatives – expanded the policy question to include the other communities within the Spring Lake Watershed, and the adjacent communities further downstream to the mouth of the Grand River at Lake Michigan to incorporate a broader group of stakeholders. The revised policy question for the Rein in the Runoff IA was:

*What stormwater management alternatives are available to the communities in the Spring Lake Watershed that allow for future development and also mitigate the effects of stormwater discharges and improve the water quality in Spring Lake, the Grand River, and ultimately, Lake Michigan?*

To most effectively answer this policy question for local and regional stakeholders and accomplish the identified project goals, the project team adapted the Scavia and Bricker (2006) IA approach described above. This adapted approach included five underlying steps that guided the Rein in the Runoff Integrated Assessment (Figure 1-1). Each of these steps had several components, and each one was informed by a broad range of participants, including scientists (team members and project reviewers), decision-makers and stakeholders (project partners), and members of the general public (Rabalais et al 2002).



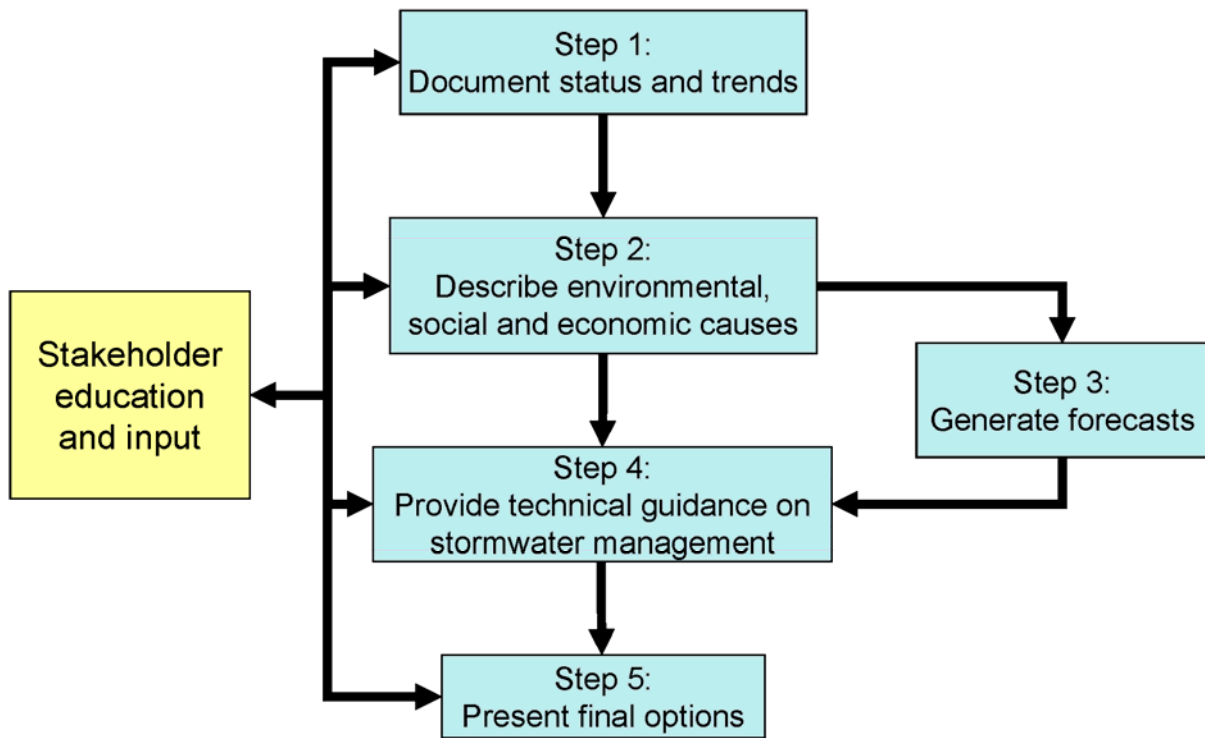


Figure 1-1. Rein in the Runoff Integrated Assessment approach for stormwater management alternatives in the Spring Lake Watershed.

